

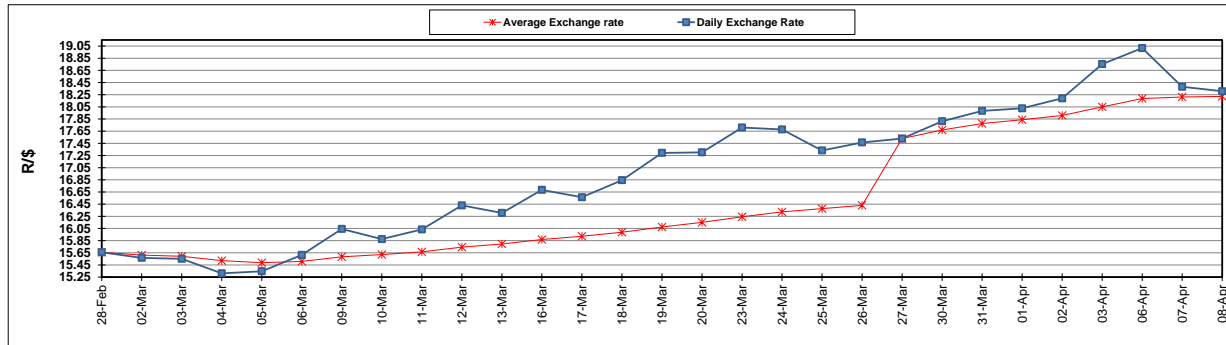
	PETROL 95 ULP	PETROL 93 ULP & LRP	DIESEL 0.05%	DIESEL 0.005%	ILL. PAR.
GAUTENG PUMP PRICE (SA c/l) AS FROM 01/04/2020	1,396.000	1,376.000	-	-	-
WHOLESALE PRICE (SA c/l) AS FROM 01/04/2020	-	-	1,269.560	1,273.960	672.828
SINGLE NATIONAL MAXIMUM RETAIL PRICE	-	-	-	-	840.000
BASIC FUEL PRICE - 08/04/2020 (SA c/l)	302.901	299.114	441.717	450.454	319.412
PRESS RELEASE CONTRIBUTION TO BFP 01/04/2020 - 08/04/2020 (SA c/l)	448.770	438.770	518.630	523.030	468.128
UNIT OVER/(UNDER) RECOVERY - 08/04/2020 (SA c/l)	145.869	139.656	76.913	72.576	148.716
AVERAGE BASIC FUEL PRICE 27/03/2020 - 08/04/2020	315.327	310.301	451.369	458.921	334.038
AVERAGE UNIT OVER/(UNDER) RECOVERY 27/03/2020 - 08/04/2020	206.509	197.535	122.261	119.442	200.090

### ANALYSIS MOVEMENT OF AVERAGE OVER/(UNDER) RECOVERY

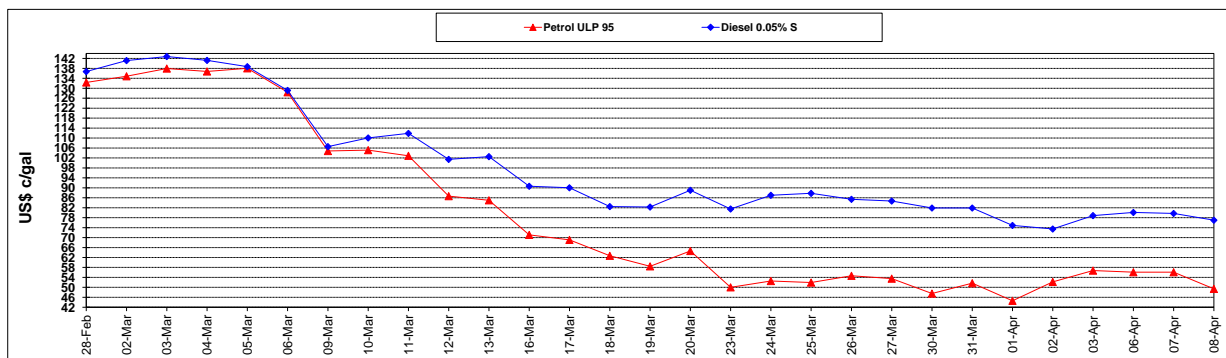
	PETROL 95	PETROL 93	DIESEL 0.05%	DIESEL 0.005%	ILL. PAR.
- MOVEMENT IN INTERNATIONAL PRODUCT PRICES	237.511	228.043	166.637	164.561	232.931
- MOVEMENT IN EXCHANGE RATE	(31.001)	(30.507)	(44.376)	(45.119)	(32.841)
AVERAGE UNIT OVER/(UNDER) RECOVERY 27/03/2020 - 08/04/2020	206.509	197.535	122.261	119.442	200.090

### R/\$ EXCHANGE RATE - (R/\$18.3064 - 08/04/2020)

#### EXCHANGE RATE USED IN BASIC FUEL PRICE



#### INTERNATIONAL PRODUCT PRICES OF BASKET USED IN BASIC FUEL PRICE



#### BASIC FUEL PRICE IN SA CENTS PER LITRE

